



ENVIRONMENT TRUST FOR RICHMOND UPON THAMES

Spring Newsletter 2006



8 KING STREET, RICHMOND

The owners of the building, also known as Broad's, withdrew at the last minute from the Magistrate's Court hearing into a stay of the Council's compulsory Purchase Order, leaving the way clear for a Public Inquiry into the CPO. The Department of Culture, Media and Sport has confirmed that one will be called within the next 3 or 4 months.

In the meantime, the owners have lodged an application for planning permission for repairs to the building including the demolition of the 'closet' extension. We have been assured that this will have no effect on the Compulsory Purchase Order. The Trust has accepted the Architectural Fund's offer of an acquisition loan for the building at CPO value, and awaits the outcome of the Inquiry.

GROVE GARDENS CHAPEL

Grove Gardens Chapel is working hard to earn its living! From October to December 2005 it was the venue for meetings of the Richmond Local History Society, London International Churches, Richmond Environment Network, classes in Pilates, First-Aid, Life Drawing and wreath-making as well as rehearsals for drama and music and receptions for christenings and funerals!

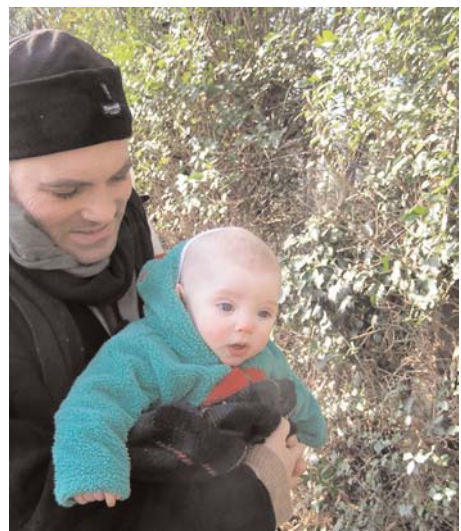
If this activity is maintained for the year, it will show a healthy profit that will go towards carrying out the last of its capital projects. Many thanks to Andrew Stewart for his work as the caretaker, and to the rest of the committee Derek Plummer, Barbara Vosper, Claire McCormack and Jo Kitson.

CHARTERMARK

You will be pleased to hear that we have been accredited as 'Investor in People'. Thanks to all those who were interviewed or sent their comments to our assessor. The accreditation is very important to us as some of our funding bodies require it. This will be an ongoing process as each 3 years we have to be reassessed. One of the most important aspects of being an Investor in People is the training which is given to our staff and volunteers, both formal and informal. If anyone is actively involved in one of our projects and feels there is some training which would be useful please let us know.



INVESTOR IN PEOPLE



Meet the Trust's newest member

Photographed at the January Volunteer Event at Warren Footpath, here is Tilly with her father Ken McKenzie, Project Manager for London's Arcadia.

TWICKENHAM POWER STATION

An application for a large development of flats in the small-scale residential environment of Hamilton and Talbot Roads, between Twickenham Green and the River Crane, triggered a wave of opposition among local residents. This was especially vociferous when it was found that it



Twickenham Power Station

involved the demolition of the group of buildings that provided electricity to the Borough in the early 1900s, Twickenham Power Station. Local resident Cathy Cooper led the opposition and brought the case to the Trust.

Although on the Council's list as Buildings of Townscape Merit, they could not be protected from demolition as they were not in a Conservation Area – surprising given the charming character of the mixed development around them, much of which was built to accommodate workers of the power station. Thanks to the efforts of 2 local councillors and the Environment Trust, a Conservation Area was declared in January and at the same time the Trust lodged an application for listed building status for the power station buildings. English Heritage are currently assessing the case. Anyone interested in this group of buildings and the area in which they stand should contact Cathy on 8898 2641.

ENVIRONMENT TRUST ART PICNICS

Have you ever wondered whether you can draw, but have been discouraged by the need to sign up for lengthy courses or exams?

Would you like to try in the open air, with the guidance of a well-known local artist and all materials provided?

The Trust is planning a series of Sketching Picnics, which will be open to people of all ages and abilities, individuals and families. We will use natural landscapes and interesting buildings as subject matter, and the teaching will cover a range of techniques, including pencil, crayon, charcoal, and simple printmaking using found materials. You need only bring a picnic!

The first picnic is on Sunday 7 May, from 12-4pm and will be held at Kilmorey Mausoleum Gardens, on St Margarets Road almost opposite the Ailsa Tavern.

Celebrated local artist Jill Storey will help us to look and to find inspiration in the unusual Egyptian-style building and in the wildlife garden that surrounds it. Tickets £5 or £10 for a family.

Contact the office on 8891 5455 for more information and to book your place.



Jill Storey at work in her garden

VOLUNTEER NEWS



Tasha Hunter of London's Arcadia demonstrates willow coppicing to Trust volunteers.

There has been no loss of momentum in volunteer activities since our last report in the autumn. In October last year and January 2006, we returned to the Warren towpath to help with hedge trimming and removal of diseased shrubs or trees beside the footpath. On the second occasion, we also cut willow spiles along the foreshore in order to foster growth in the young trees and to provide material for new hedges elsewhere. Thanks to Tasha Hunter (Arcadia Project Officer) who provided excellent instruction, the cut willows were promptly re-planted by a different group of volunteers to make a new hedge in front of Ham House. We will wait with interest to see how the hedge develops.

November as usual was marked by events surrounding the annual "draw off" when the Thames foreshore is fully exposed for a limited period. This year we organised three clean ups, at Richmond Riverside, Twickenham Riverside and Richmond Lock whilst our friends in the Ham and Petersham Association ran a fourth event on the Surrey bank near Ham House. In all, over 100

volunteers took part, ranging in age from about 14 to over 80. They included for the first time an enthusiastic group of boys, teachers and parents from Tower House School and we hope similar groups from other schools will follow suit in future. We also had excellent support from London's Arcadia, the PLA, Richmond and York House Societies, Eel Pie and Twickenham Park Residents' Associations. With their help, vast quantities of rubbish were removed from the foreshore, including the usual batch of shopping trolleys, a motor bike, marine and car batteries and similar toxic material. However a rich variety of invertebrates were also found to be thriving near Eel Pie Island...encouraging signs that looking after the marine environment is a worthwhile activity.

Vineyard Passage gardening group has just finished new planting in Gerald's garden, close to Grosvenor Avenue. Volunteers are welcome at their gardening sessions, at 10.30am. on the first Saturday in the month.

We now look forward to a varied programme in the next few months, with events planned in the Old Deer Park, at Kilmorey Mausoleum, Bridge House Gardens and Petersham Lodge Woods. We are always pleased to welcome new volunteers so please contact Jenny at the office and she will send you further details.

Hello Angela!

Michelle Friel-Martin left us for a new life with her family in Manchester in October, and in her place as Office Co-ordinator we welcome Angela Kay, who arrived in time to be engulfed by the work on the Art Auction! Her feet have now touched the ground and she is getting to know the membership and volunteers and applying her energies to fundraising and the complexities of our IT system.

Species found during Twickenham draw-off volunteer event, 19th November 2005

- Zebra mussel - *Dreissena polymorpha*
- Freshwater Cockle or pea mussel - *Sphaerium sp*
- Duck mussel - *Anodonta anatina*
- Painter's mussel - *Unio pictorum*
- Nerite - *Theodoxus fluviatilis*
- Large snail - *Limnaea sp*
- Freshwater shrimp - *Gammarus pulex*
- River sponge - *Ephydatia fluviatilis*
- Leech - *Erpobdella sp*
- Chinese Mitten crabs - *Eriocheir sinensis*
- Eel - *Anguilla anguilla*



KILMOREY MAUSOLEUM

Kilmorey Mausoleum will be a popular venue for the Environment Trust this spring. First, it will be the destination on Saturday March 25 for a morning session by volunteers from the Trust's group, which works at various sites around the borough including the towpath and Terrace Fields.

Then, on the afternoon of Saturday April 8, there will be another Open Day at the mausoleum which will offer people a rare opportunity to visit this grade II* listed property which is hidden away behind a brick wall on St Margarets Road roughly opposite the Ailsa Tavern.

This will be an opportunity to see not only the interior of the mausoleum which was commissioned in 1854 by the Earl of Kilmorey for his mistress Priscilla Hoste but also the grounds which are now being looked after by the Trust. At this date in early April the bulbs planted there should be in full bloom.

The grounds are now being managed as a wildlife nature garden by a team of volunteers who work there regularly to keep the growth under control. Over the past three years there has been substantial planting – of trees, shrubs, wild roses, anemones and other ancient English varieties as well as a plethora of daffodils and narcissi.

In addition footpaths have been created and benches built so that visitors can have a chance to rest during their visits. Talks have also begun about the possibility of adding a compost lavatory which would increase the appeal of the site to local schools which might wish to use it for educational visits.

A survey of birdlife has been launched this year to increase our knowledge of what is to be found there. This is being conducted by a Trust member who is also a keen ornithologist. Future plans for the site include staging a sketching picnic there later this spring – see report elsewhere in this newsletter.

This is all part of the Trust's plans to bring the mausoleum and its grounds – a hidden garden – to greater public knowledge within the borough. Past open days have proved very popular with some 500 people visiting the Kilmorey Mausoleum during the two open days held last year. Another open day will be held in September.

TWICKENHAM CHALLENGE

Please vote now for the Trust!

The Environment Trust was one of 5 organisations to submit proposals for a public benefit building to be included in the redevelopment of Twickenham Baths site. In return for a site at peppercorn rent, the Council-devised challenge was to design a facility that would answer a need and be popular with the public. The Trust started work in 2003 using the lessons of the many failed schemes for the site, and bringing together the expertise of local groups and businesses to design a facility that would use the unique riverside site to promote river use and safety, education about the river's ecology and history, to animate the riverfront with a boat-hire station, and to be an open and accessible resource for all ages. After 3 years, and hours of work, the Trust is one of 3 competitors left in the race. Our proposals are on the Council's website, and in the libraries, and are being consulted on at the moment.

ENVIRONMENT TRUST FOR RICHMOND UPON THAMES

55 Heath Road, Twickenham TW1 4AW

Tel: 020 8891 5455

e mail: environment.trust@btinternet.com

www.environmenttrust.co.uk

Registered Charity number 294869

Company limited by guarantee. Registered in England number 02030430

